



RAILPRO®  
BALUSTRADE

frameless  
**direct**   
your complete solution

complete packages / glass / hardware

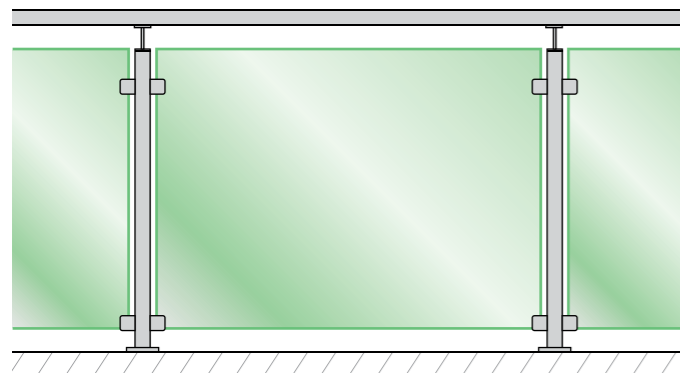
IN-STORE NOW  
LOWEST PRICES  
GUARANTEED



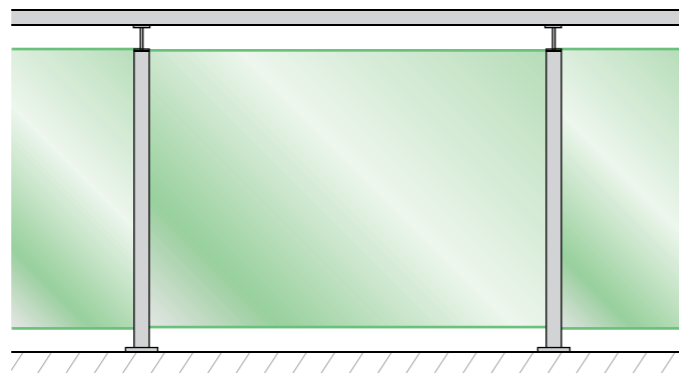
## frameless**direct** RailPro® Balustrade

Our constant research and product development, using only the best quality materials and most advanced products in the world, have been made available to you.

**GC Series**

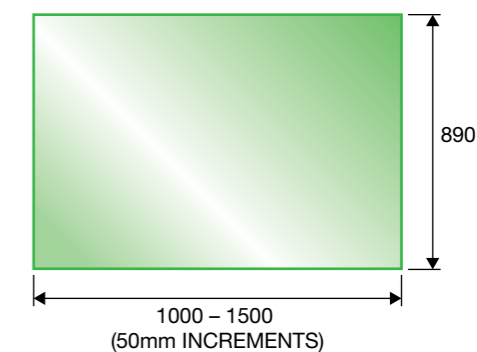
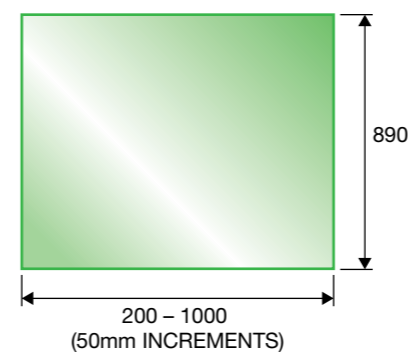


**CH Series**



## GLASS RANGE (IN STOCK)

- 12mm clear toughened glass
- R2 Corners and polished edges

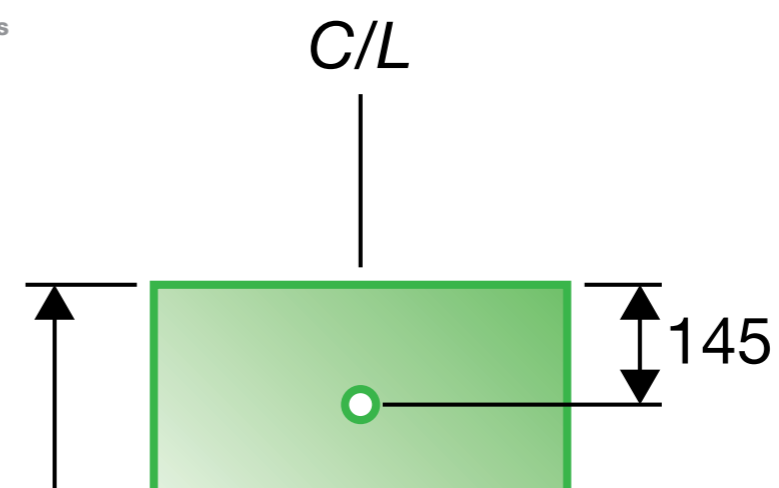


\*SUBJECT TO AVAILABILITY / ALL MEASUREMENTS IN mm

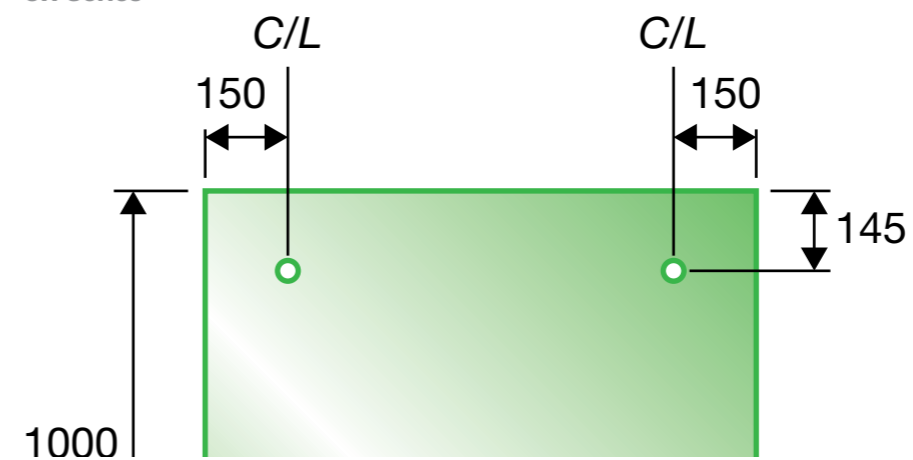


## DETAIL DRAWING (with SELECTED HANDRAIL)

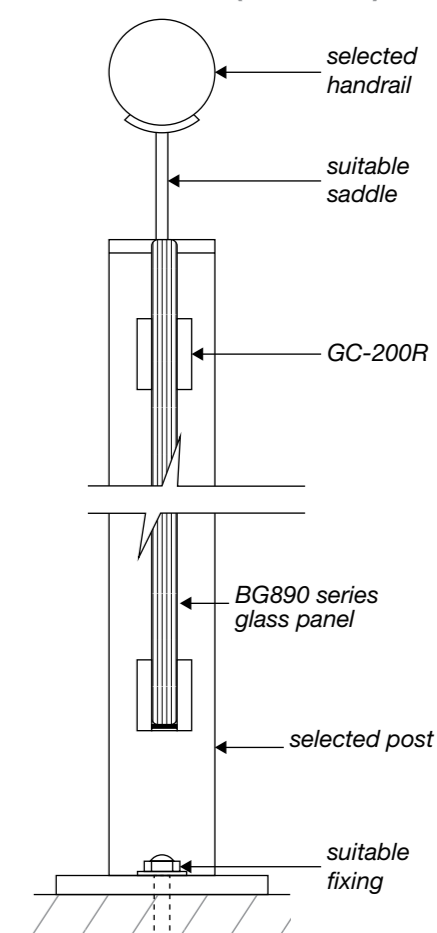
**GC Series**



**CH Series**



**GC Series (Side Detail)**

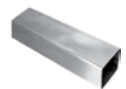


# HARDWARE

## HANDRAILS



**TSR-50**  
50mm Round



**TSS-50**  
50mm Square



**SRT16M03816**  
38.1mm Round



**SRE16M255015**  
25mm x 50mm

## HANDRAIL CONNECTIONS



**SSA-04**  
Wall Bracket



**SSA-25 & SSA-26**  
Wall Bracket



**R38WALLFLANGE**  
Wall Bracket



**25x50WALLFLANGE**  
Wall Bracket



**SSA-05**  
Corner



**SSA-24**  
Corner



**R38ELB**  
Corner



**25x50ELB**  
Corner



**SSA-07**  
Joiner



**SSA-27**  
Joiner



**R38JOINER**  
Joiner



**25x50JOINER**  
Joiner



**SSA-11**  
End Cap



**SSA-10**  
End Cap



**R38END**  
End Cap



**25x50END**  
End Cap

## STAINLESS STEEL POSTS



**TSSB-50**  
50mm 316 Stainless  
Steel Square Post



**TSRB-50**  
50mm 316 Stainless  
Steel Round Post

## CLAMPS & END CAPS



**GS-200**  
D-Clamp Square



**GS-200R**  
D-Clamp Round



**SSF-1**  
Square Post  
w/ Saddle



**RSF-2**  
Round Post  
w/ Saddle

## SLOTTED POSTS



**TSR-S0**  
Single Slot Post



**TSR-S90**  
Double Slot 90° Post



**TSR-S180**  
Double Slot 90° Post

## CONTACT US

### Frameless Direct Pty Ltd

21 Encore Avenue, Somerton VIC 3062  
t: +61 3 9303 9008  
f: +61 3 8339 2425

Visit our online store at:  
[www.framelessdirect.com.au](http://www.framelessdirect.com.au)

frameless  
**direct**   
your complete solution

