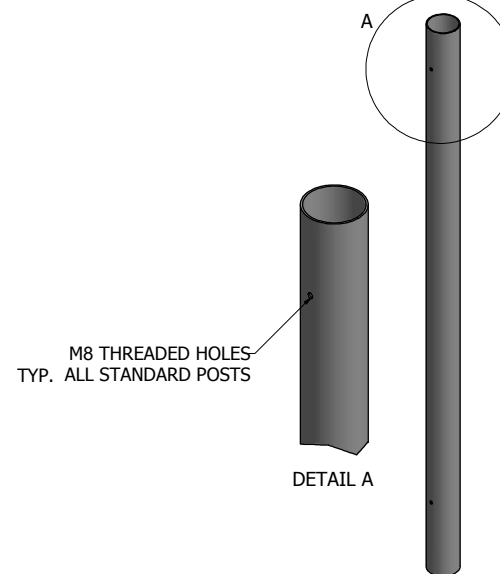
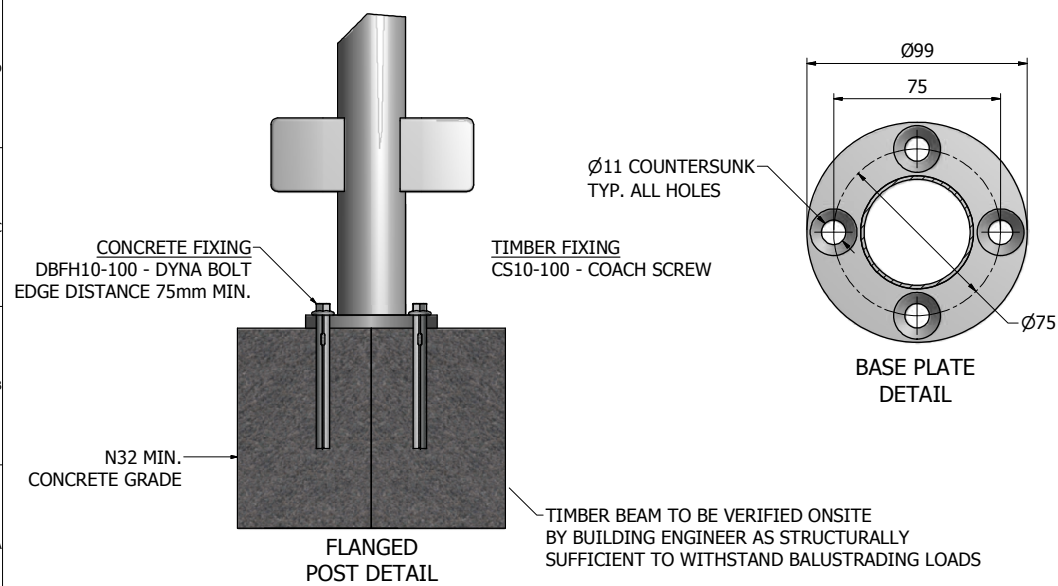
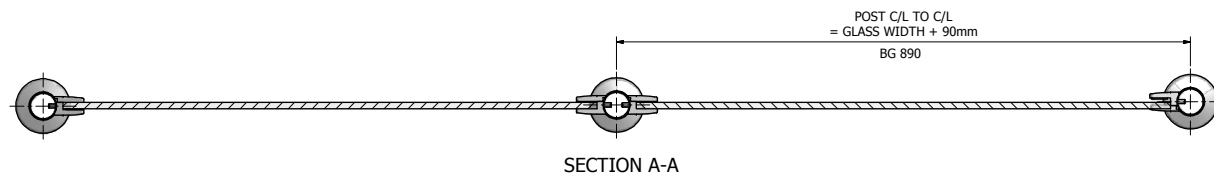
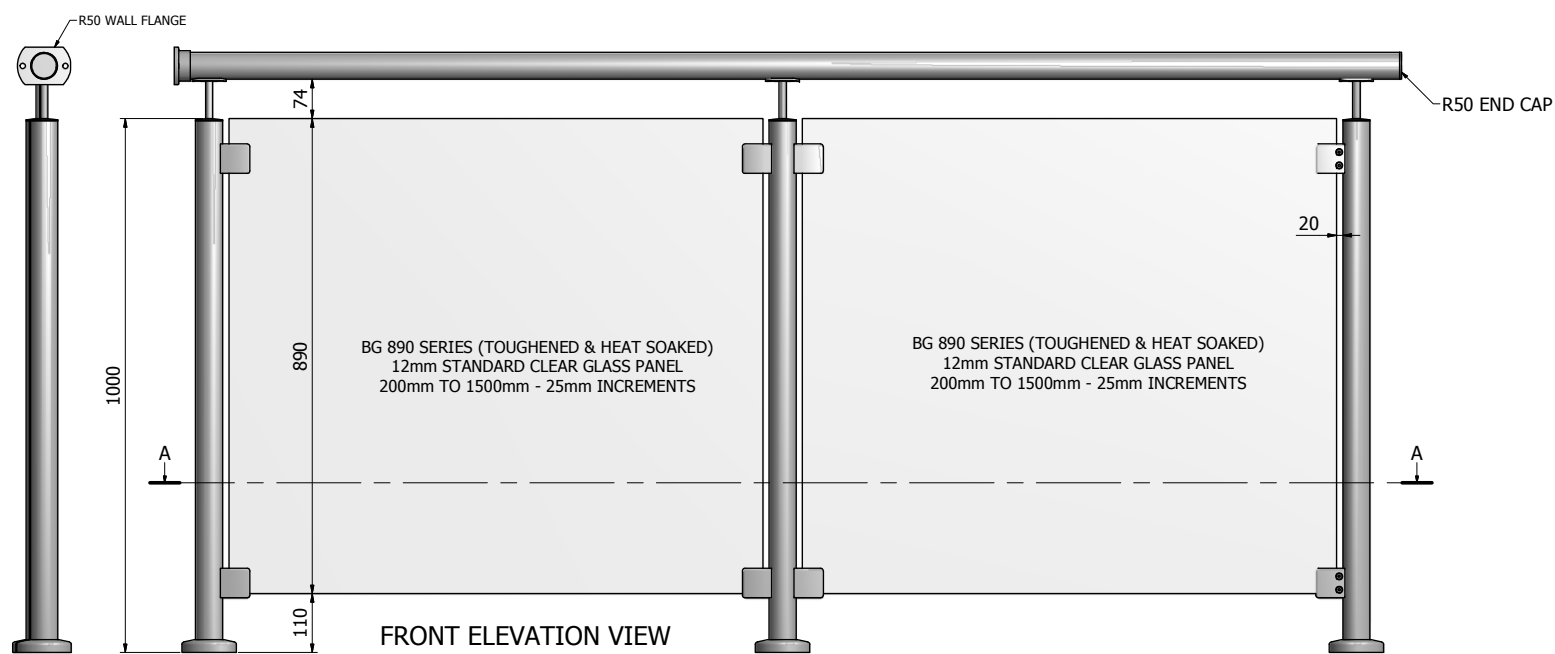




RAILPRO CLAMP SERIES ROUND POST BALUSTRADE SYSTEM INSTALLATION GUIDE

PRODUCT CODE: RCS-RP



PRODUCT CODE:
RCS-RP

PRODUCT TYPE:
RAILPRO CLAMP SERIES - ROUNDPOSTS

AVAILABLE FINISHES:
- SATIN
- POLISHED

AUSTRALIAN STANDARDS:
REGULATION No. AS2088 - A GRADE TOUGHENED GLASS
COMPLIES TO AS1170.1-2002 SUBSECTION 3.6 BARRIERS
TABLE 3.3 - MINIMUM IMPOSED ACTIONS FOR BARRIERS
TESTED AT 750 N m

GLASS:
BG 890 SERIES
12mm CLEAR TOUGHENED
WIDTHS AVAILABLE FROM 200mm TO 1500mm
(IN 25mm INCREMENTS)

HANDRAIL:
- TSR-50 RAIL

POSTS
- RP50END1000 - END POST
- RP50CNR1000 - CORNER POST
- RP50INT1000 - INTERMITTENT POST
- RP1300 - CUSTOM CUT TO SIZE POST

RECOMMENDED BASE FIXINGS
- BASE PLATE - ON CONCRETE
M10 x 100mm STAINLESS ALLTHREAD & NUT
CHEMSET CHEMICAL ANCHOR
OR 10mm x 100mm STAINLESS STEEL DYNA BOLT

- BASE PLATE ON TIMBER
M10 x 100mm STAINLESS STEEL
HEX HEAD COACH SCREW

**frameless
direct**
architectural glass and hardware

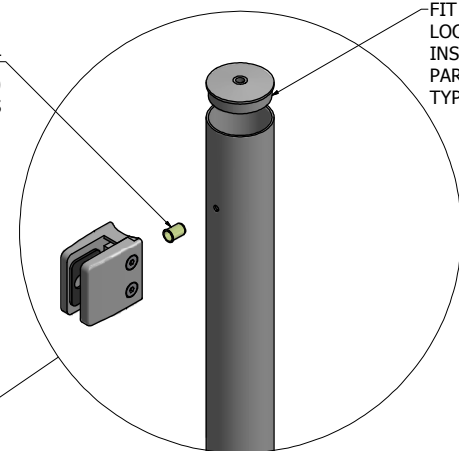
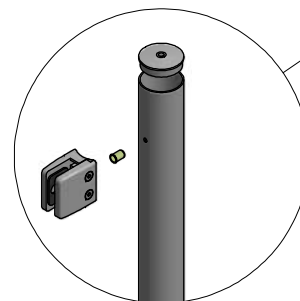
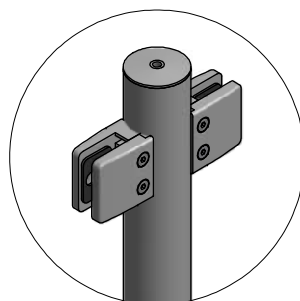
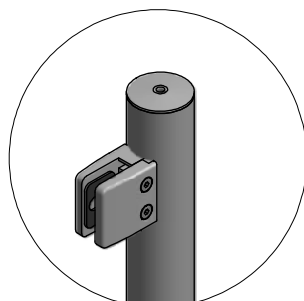
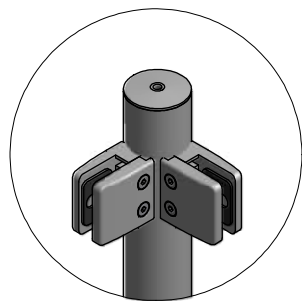
21 ENCORE AVENUE, SOMERTON, VICTORIA AUSTRALIA 3062

WEBSITE: www.framelessdirect.com.au
EMAIL: sales@framelessdirect.com.au

TEL: 03 9303 9008
FAX: 03 8339 2425

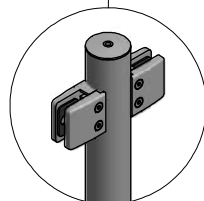
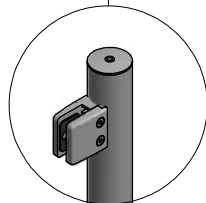
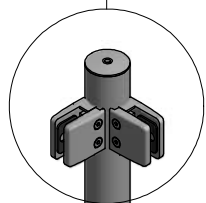
RAILPRO CLAMP SERIES

VARIOUS POST DETAILS - ROUND



DRILL POST & FIT
M8 BNI (BLIND NUT INSERT)
TO SUIT CUSTOM GLASS

FIT CAP USING
LOCTITE 480
INSTANT ADHESIVE
PART No. 45506
TYP. ALL POSTS



SQP50CNR1000
CORNER POST

RP50END1000
END POST

RP50INT1000
INTERMITTENT POST

RP 1300
CUSTOM CUT TO SIZE POST

PRODUCT CODE:
RCS-RP

PRODUCT TYPE:
RAILPRO CLAMP SERIES - ROUND POSTS

AVAILABLE FINISHES:
- SATIN
- POLISHED

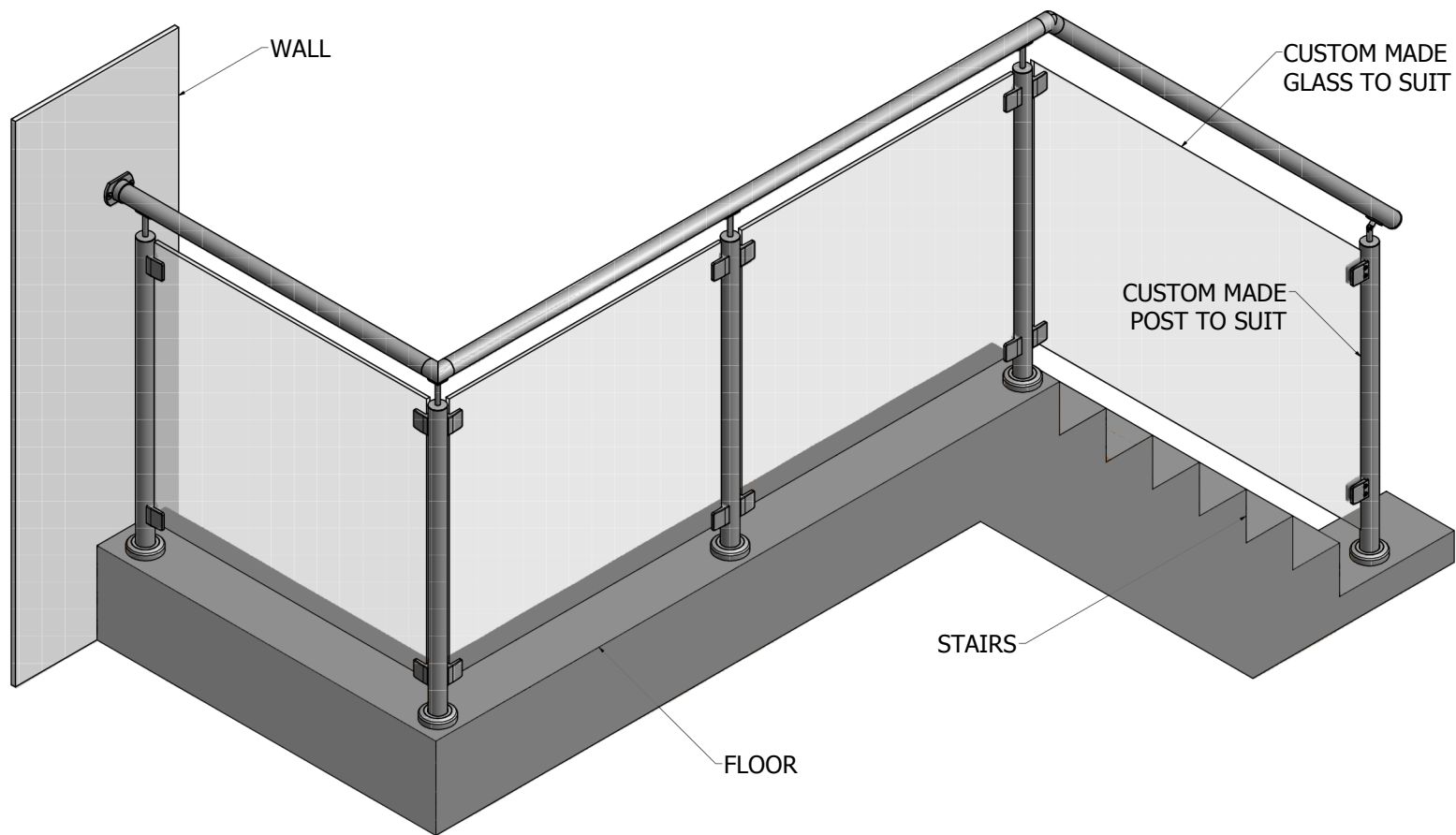
POSTS
- RP50END1000 - END POST
- RP50CNR1000 - CORNER POST
- RP50INT1000 - INTERMITTENT POST
- RP1300 - CUSTOM CUT TO SIZE POST

frameless
direct
architectural glass and hardware

21 ENCORE AVENUE, SOMERTON, VICTORIA AUSTRALIA 3062

WEBSITE: www.framelessdirect.com.au
EMAIL: sales@framelessdirect.com.au

TEL: 03 9303 9008
FAX: 03 8339 2425



PRODUCT CODE:
RCS-RP

PRODUCT TYPE:
RAILPRO CLAMP SERIES - ROUNDPOSTS

AVAILABLE FINISHES:
- SATIN
- POLISHED

AUSTRALIAN STANDARDS:
REGULATION No. AS2088 - A GRADE TOUGHENED GLASS
COMPLIES TO AS1170.1-2002 SUBSECTION 3.6 BARRIERS
TABLE 3.3 - MINIMUM IMPOSED ACTIONS FOR BARRIERS
TESTED AT 750 N m

GLASS:
BG 890 SERIES
12mm CLEAR TOUGHENED
WIDTHS AVAILABLE FROM 200mm TO 1500mm
(IN 25mm INCREMENTS)

HANDRAIL:
- TSR-50 RAIL

POSTS
- RP50END1000 - END POST
- RP50CNR1000 - CORNER POST
- RP50INT1000 - INTERMITTENT POST
- RP1300 - CUSTOM CUT TO SIZE POST

RECOMMENDED BASE FIXINGS
- BASE PLATE - ON CONCRETE
M10 x 100mm STAINLESS ALLTHREAD & NUT
CHEMSET CHEMICAL ANCHOR
OR 10mm x 100mm STAINLESS STEEL DYNA BOLT

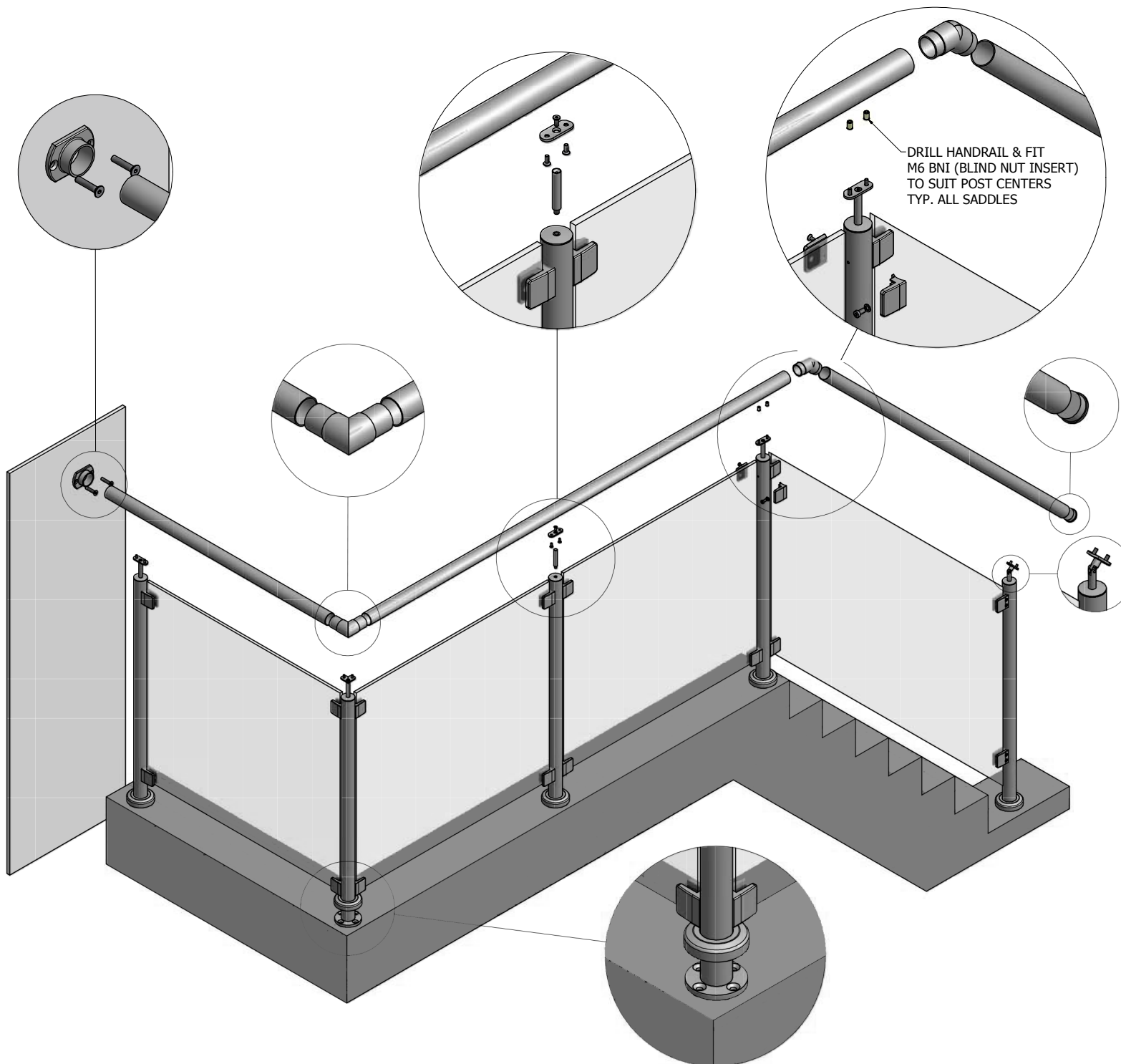
- BASE PLATE ON TIMBER
M10 x 100mm STAINLESS STEEL
HEX HEAD COACH SCREW

frameless
direct
architectural glass and hardware **f**

21 ENCORE AVENUE, SOMERTON, VICTORIA AUSTRALIA 3062

WEBSITE: www.framelessdirect.com.au
EMAIL: sales@framelessdirect.com.au

TEL: 03 9303 9008
FAX: 03 8339 2425



PRODUCT CODE:
RCS-RP

PRODUCT TYPE:
RAILPRO CLAMP SERIES - ROUNDPOSTS

AVAILABLE FINISHES:
- SATIN
- POLISHED

AUSTRALIAN STANDARDS:
REGULATION No. AS2088 - A GRADE TOUGHENED GLASS
COMPLIES TO AS1170.1-2002 SUBSECTION 3.6 BARRIERS
TABLE 3.3 - MINIMUM IMPOSED ACTIONS FOR BARRIERS
TESTED AT 750 N m

GLASS:
BG 890 SERIES
12mm CLEAR TOUGHENED
WIDTHS AVAILABLE FROM 200mm TO 1500mm
(IN 25mm INCREMENTS)

HANDRAIL:
- TSR-50 RAIL

POSTS
- RP50END1000 - END POST
- RP50CNR1000 - CORNER POST
- RP50INT1000 - INTERMITTENT POST
- RP1300 - CUSTOM CUT TO SIZE POST

RECOMMENDED BASE FIXINGS
- BASE PLATE - ON CONCRETE
M10 x 100mm STAINLESS ALLTHREAD & NUT
CHEMSET CHEMICAL ANCHOR
OR 10mm x 100mm STAINLESS STEEL DYNA BOLT

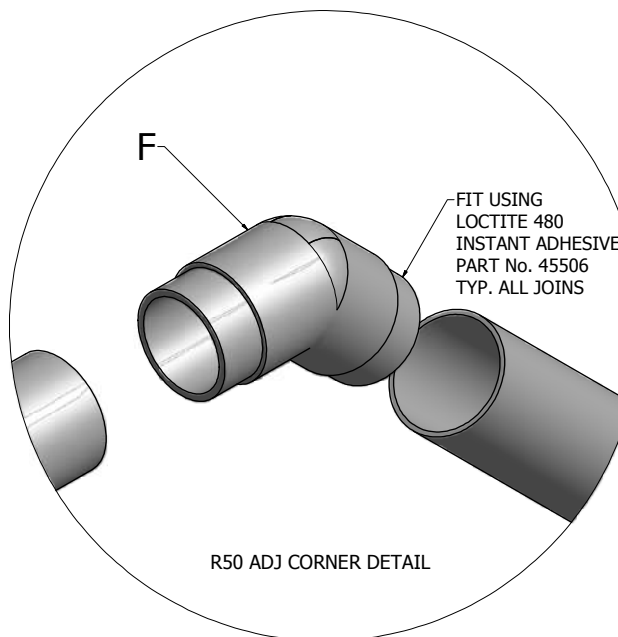
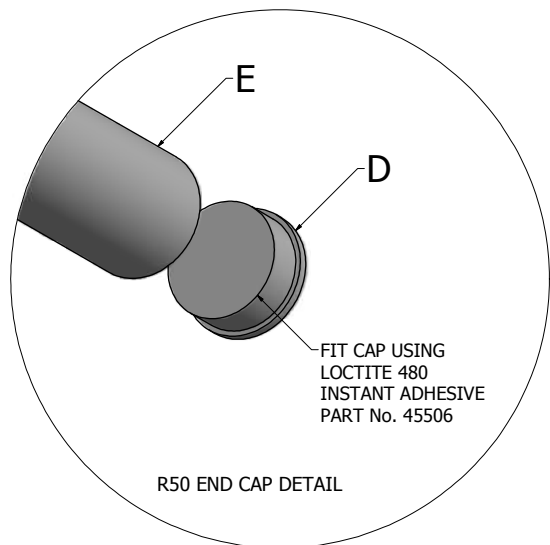
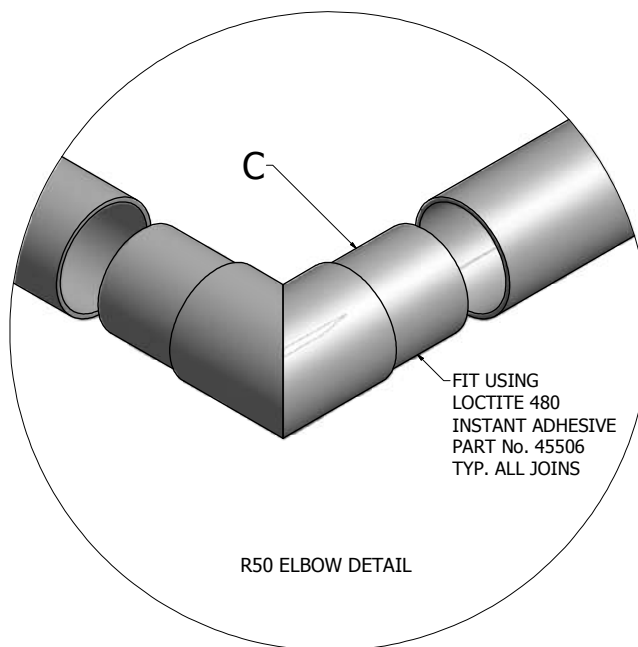
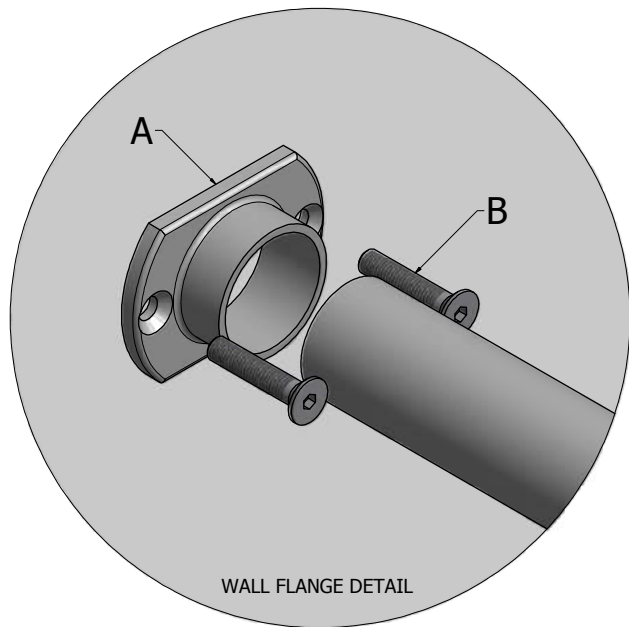
- BASE PLATE ON TIMBER
M10 x 100mm STAINLESS STEEL
HEX HEAD COACH SCREW

frameless
direct **f**
architectural glass and hardware

21 ENCORE AVENUE, SOMERTON, VICTORIA AUSTRALIA 3062

WEBSITE: www.framelessdirect.com.au
EMAIL: sales@framelessdirect.com.au

TEL: 03 9303 9008
FAX: 03 8339 2425



RAILPRO CLAMP SERIES R50 HAND RAIL OPTIONS

ITEM LIST

- A - R50 WALL FLANGE
- B - WALL / POST FIXING SCREW
- C - R50 ELBOW
- D - R50 END CAP
- E - TSR-50 - RAIL
- F - R50 ADJ JOINER

frameless
direct
architectural glass and hardware

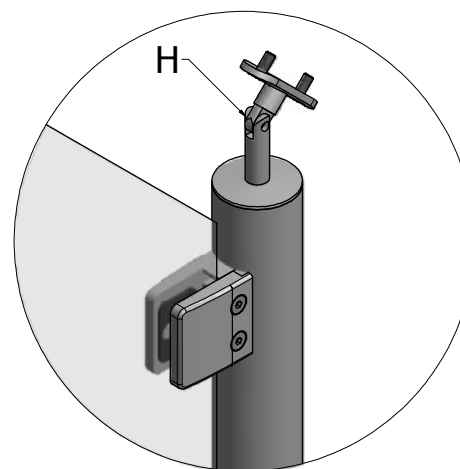
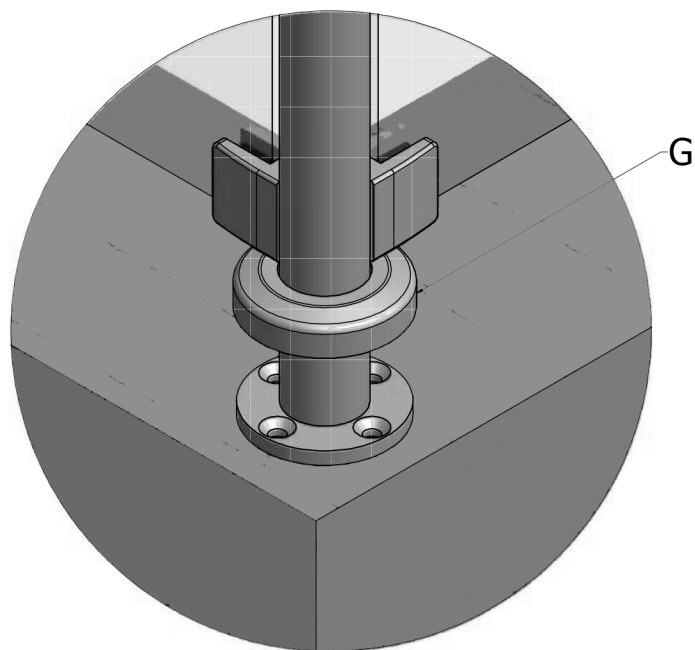
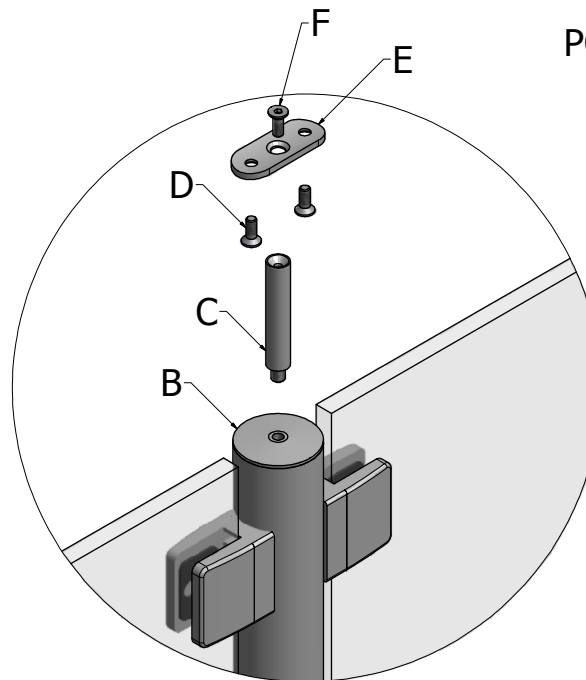
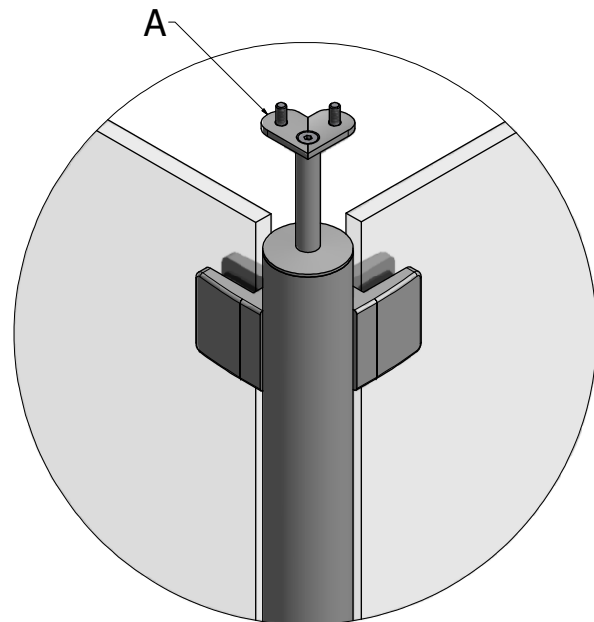
21 ENCORE AVENUE, SOMERTON, VICTORIA AUSTRALIA 3062

WEBSITE: www.framelessdirect.com.au
EMAIL: sales@framelessdirect.com.au

TEL: 03 9303 9008
FAX: 03 8339 2425

RAILPRO CLAMP SERIES

POST ATTACHMENT DETAILS - ROUND



ITEM LIST

- A - SSA-14 CORNER COLLAR
- B - SSA-19 THREADED POST CAP
- C - SSA-16 - SADDLE POST
- D - M6 x 16 COUNTERSUNK SETSCREW
- E - SSA-12 COLLAR
- F - M6 x 16 COUNTERSUNK SETSCREW
- G - BASE PLATE COVER ROUND
- H - SSA-16 ADJUSTABLE SADDLE POST

frameless
direct
architectural glass and hardware



21 ENCORE AVENUE, SOMERTON, VICTORIA AUSTRALIA 3062

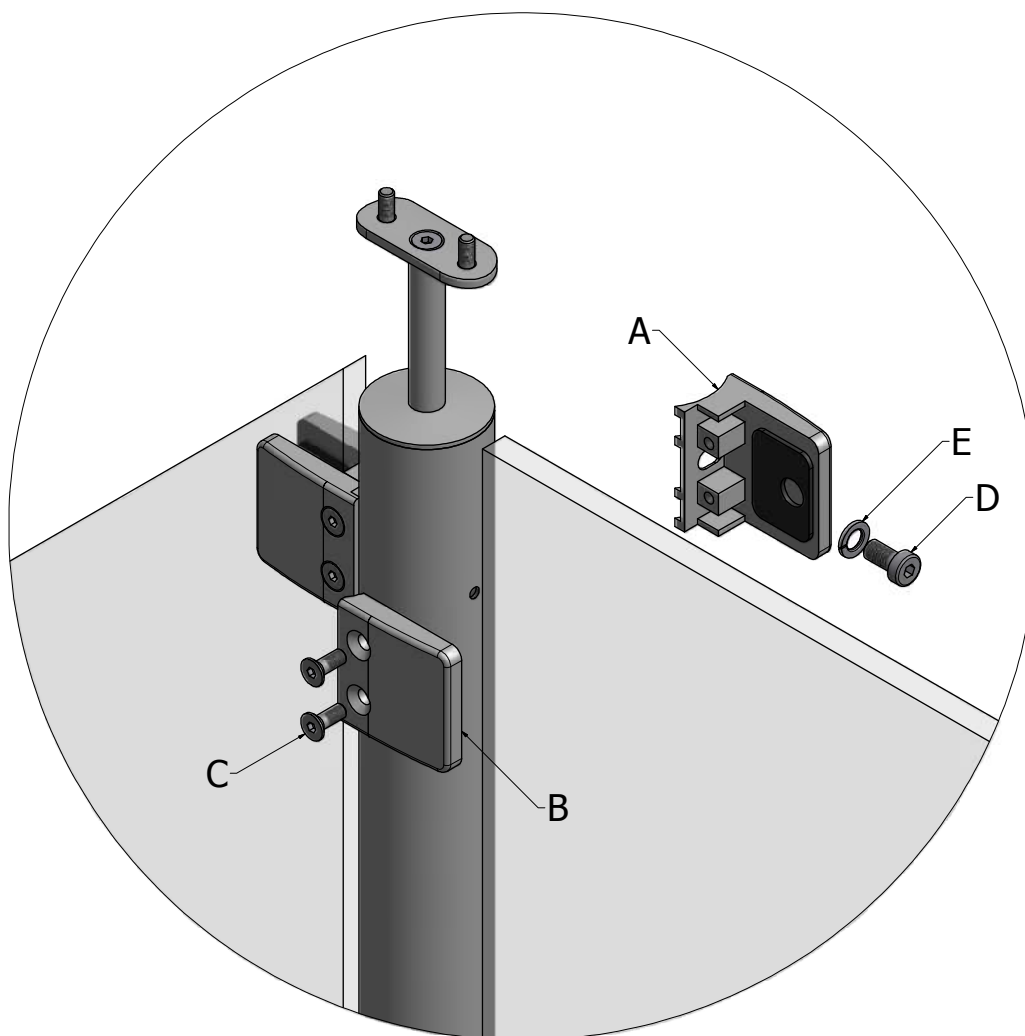
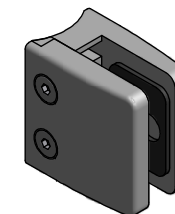
WEBSITE: www.framelessdirect.com.au
EMAIL: sales@framelessdirect.com.au

TEL: 03 9303 9008
FAX: 03 8339 2425

RAILPRO CLAMP SERIES

GLASS CLAMP DETAILS

GCR-200



ITEM LIST

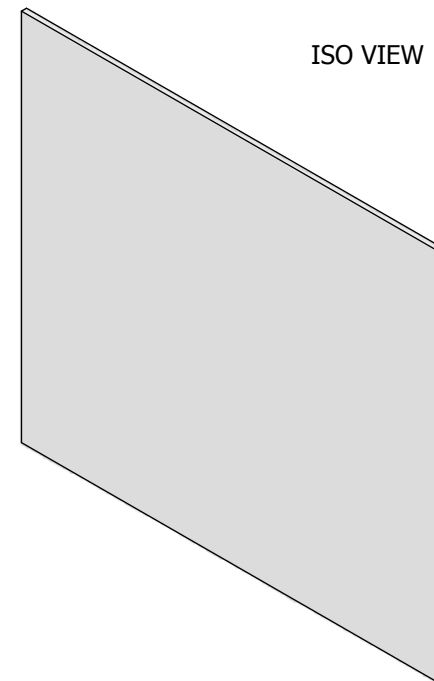
- A - GLASS CLAMP (LH)
- B - GLASS CLAMP (RH)
- C - M6 x 16 COUNTERSUNK SETSCREW
- D - M8 x 16 SOCKET HEAD CAPSCREW
- E - M6 SPRING WASHER



21 ENCORE AVENUE, SOMERTON, VICTORIA AUSTRALIA 3062

WEBSITE: www.framelessdirect.com.au
EMAIL: sales@framelessdirect.com.au

TEL: 03 9303 9008
FAX: 03 8339 2425



PRODUCT CODE: BG 890
PRODUCT TYPE: BALUSTRADE GLASS PANEL 890mm
TECHNICAL DETAILS: 12mm TOUGHENED CLEAR GLASS 2mm RADIUS CORNERS POLISHED EDGES
AUSTRALIAN STANDARDS: REGULATION No. AS2088 - A GRADE TOUGHENED GLASS
 architectural glass and hardware
21 ENCORE AVENUE, SOMERTON, VICTORIA AUSTRALIA 3062
WEBSITE: www.framelessdirect.com.au EMAIL: sales@framelessdirect.com.au
TEL: 03 9303 9008 FAX: 03 8339 2425